

Jobseeker Work Ready Support - Toi EDA Monthly Report

Data to November 2021

Introduction

This report presents latest monthly Jobseeker Work-Ready Support data and trends in the Eastern Bay of Plenty, to ensure stakeholders have up-to-date, localised workforce demand and supply information to inform their planning. These updates are compiled from data supplied by MSD Work and Income.

Part A shows data and trends for all Work and Income service centre areas in the Eastern Bay of Plenty and wider region. Part B provides data tables for each service centre.

Service centre catchments are not an exact match to Territorial Authority (TA) boundaries. Supplementary data on total Jobseeker Support at the TA level is compiled and published quarterly (comprising both Work-Ready Support and Health Condition or Disability Support).

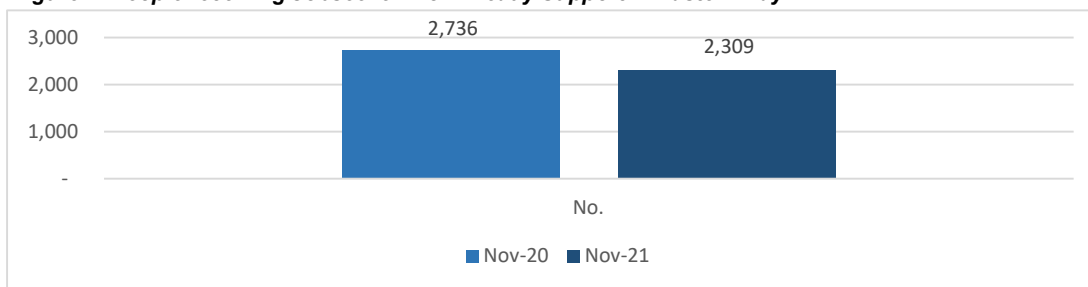
PART A: OVERVIEW

Jobseeker Work-Ready Support trends

Jobseeker Support is a weekly payment that helps people until they find work. It is available to people unemployed and looking for a job, people in part-time employment seeking more work, and people who have a health condition or disability which affects their ability to work. Data in this report excludes Jobseeker Health Condition or Disability Support grants.

The number of Eastern Bay residents receiving Jobseeker Work-Ready Support in November 2021 has fallen since the highs of last year. Latest data shows a 16% year-on-year reduction from 2,736 at the end of November 2020 to 2,309 in November 2021. This is partly due to recovery from COVID-19 impacts on the labour market, and partly due to removal of the Subsequent Child policy after 8 November 2021. Work and Income now considers the age of the youngest child when deciding whether they are eligible for Sole Parent Support rather than Jobseeker Support, which has reduced the number of Jobseeker Support recipients and increased Sole Parent Support numbers from November 2021.

Figure 1: People receiving Jobseeker Work-Ready Support in Eastern Bay



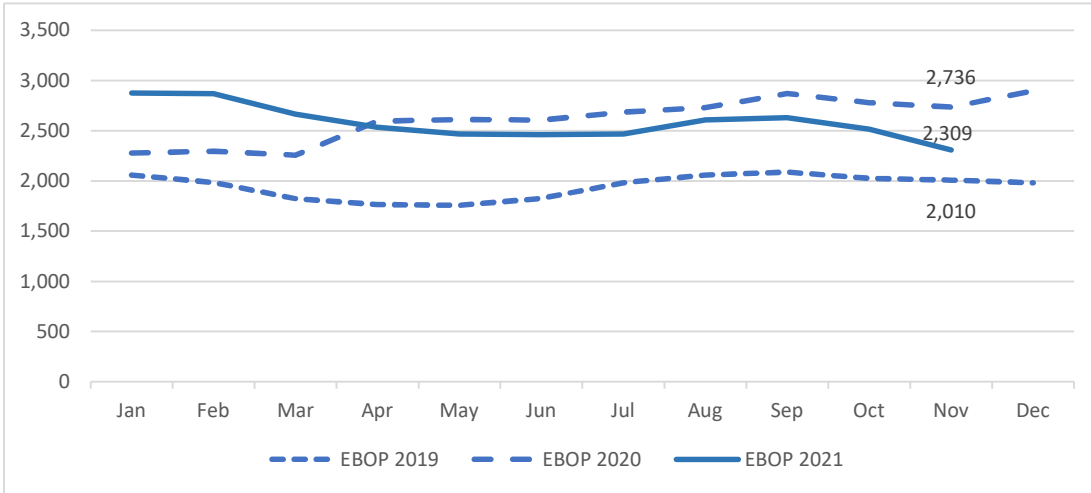
The number of Jobseeker Work-Ready Support recipients decreased substantially compared to November 2020 in all three territorial authorities: Kawerau (-16%), Opotiki (-15%) and Whakatane (-15%).

Table 1: People receiving Jobseeker Work-Ready Support by area

As at end of	Kawerau	Opotiki	Whakatane	Eastern Bay	BOP
Nov-20	857	550	1,329	2,736	12,863
Nov-21	716	469	1,124	2,309	10,799
Change (%)	-16%	-15%	-15%	-16%	-16%

Despite recent downward trends and the November 2021 policy change, the number of recipients across the Eastern Bay remains 15% higher than the pre-COVID November 2019 level (2,309 compared to 2,010).

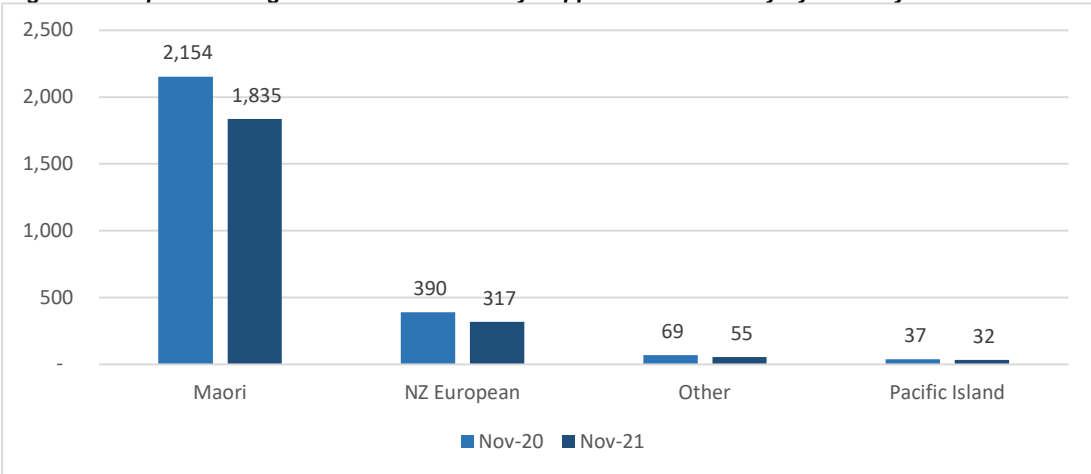
Figure 1b: Monthly Jobseeker Work-Ready Support in Eastern Bay, 2019, 2020 and 2021



Jobseeker Work-Ready Support by ethnicity

Following major increases in Work-Ready Support across all ethnic groups during 2020, latest data shows the number of recipients has returned below November 2020 levels for all ethnic groups.

Figure 2: People receiving Jobseeker Work-Ready Support in Eastern Bay by ethnicity



Note: Excludes 'unspecified'

Latest data for November 2021 shows the ethnic breakdown of Eastern Bay recipients comprised 1,835 Maori, 317 NZ European, 32 Pacific Island, and 55 who identify with other ethnic groups.

Table 2: Jobseeker Work-Ready Support by ethnicity and by area (latest data)

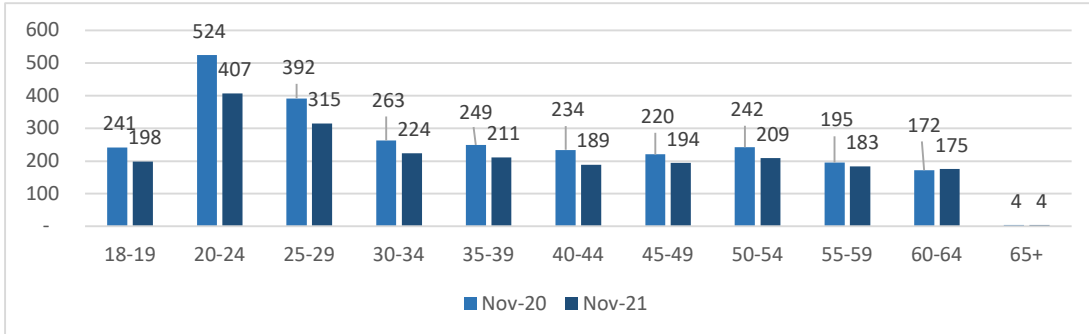
	Maori	NZ European	Pacific Island	Other
Kawerau	552	109	13	17
Opotiki	382	63	7	5
Whakatane	901	145	12	33
Eastern Bay	1,835	317	32	55
Bay of Plenty	7,253	2,235	346	617

Note: Excludes 'unspecified'

Jobseeker Work-Ready Support by age

The number of Jobseeker Work-Ready Support recipients is close to or below November 2020 levels for all age groups. Largest reductions have been in the younger age groups, which grew the most rapidly in 2020.

Figure 3: Jobseeker Work-Ready Support in Eastern Bay by age



Latest data shows 605 young people aged 18-24 in the Eastern Bay receiving Jobseeker Work-Ready Support, comprising 198 aged 18-19 and 407 aged 20-24 years.

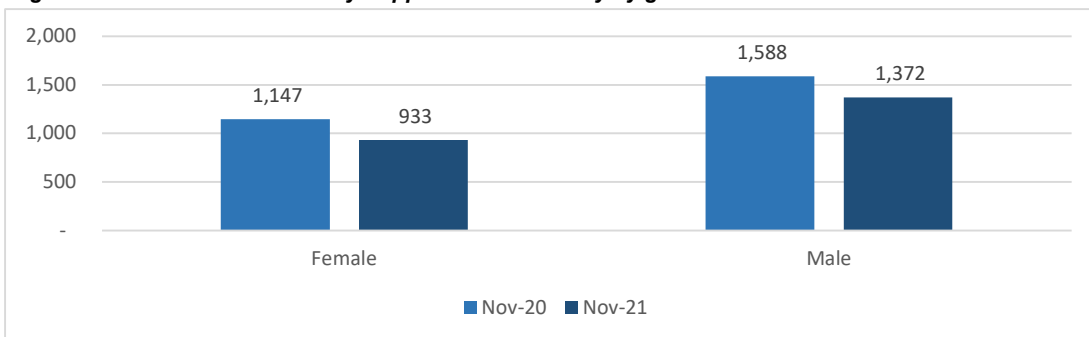
Table 3: People receiving Jobseeker Work-Ready Support by age and by area

	18-19	20-24	25-29	30-44	45-59	60+
Kawerau	60	120	97	178	199	62
Opotiki	42	77	62	119	122	47
Whakatane	96	210	156	327	265	70
Eastern Bay	198	407	315	624	586	179
Bay of Plenty	803	1,920	1,502	3,098	2,685	791

Jobseeker Work-Ready Support by gender

Jobseeker Work-Ready Support recipient numbers have fallen faster since this time last year for females (-19%) than males (-14%), which likely reflects the impact of the policy change for Sole Parent Support.

Figure 4: Jobseeker Work-Ready Support in Eastern Bay by gender



Note: Excludes a small number of people who identify as gender diverse

Latest data shows 1,372 males and 933 females in the Eastern Bay receiving Jobseeker Work-Ready Support (i.e. 60% male).

Table 4: Jobseeker Work-Ready Support by gender and by area

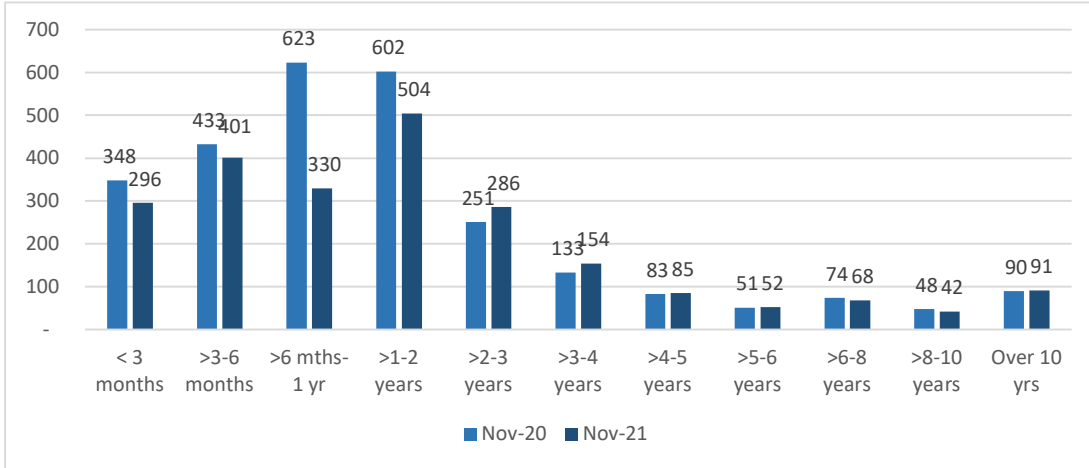
	Male	Female
Kawerau	432	283
Opotiki	271	197
Whakatane	669	453
Eastern Bay	1,372	933
Bay of Plenty	6,182	4,585

Note: Excludes a small number of people who identify as gender diverse

Jobseeker Work-Ready Support by continuous duration on benefit

Continuous duration means the length of time the person has continuously been receiving a main benefit. Since this time last year there has been a promising decrease in the number of recipients with a duration of less than one year, but a concerning increase in the number of people receiving Jobseeker Work-Ready Support for more than two years continuous duration.

Figure 5: Jobseeker Work-Ready Support by continuous duration on benefit in Eastern Bay



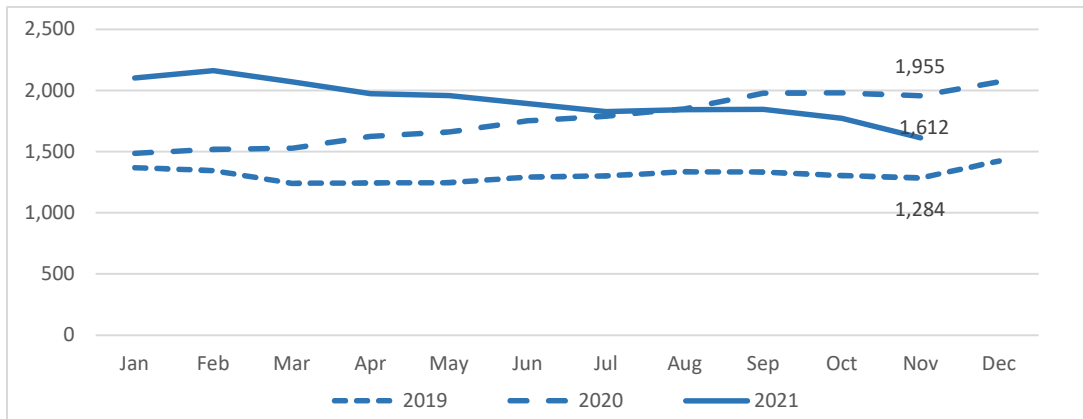
Latest data shows 296 people in the Eastern Bay on Jobseeker Work-Ready Support for less than 3 months, 401 for between 3 and 6 months, and 1,612 for more than 6 months.

Table 5: Jobseeker Work-Ready Support by continous duration on benefit and by area

	< 3 months	>3-6 months	>6 mths-3 yrs	>3-10 years	Over 10 yrs
Kawerau	69	97	364	142	44
Opotiki	73	106	203	70	17
Whakatane	154	198	553	189	30
Eastern Bay	296	401	1,120	401	91
Bay of Plenty	1,685	1,778	5,266	1,644	426

Despite recent downward trends and the November 2021 policy change, the number of recipients across the Eastern Bay with more than 6 months duration remains 26% higher than the pre-COVID November 2019 level (1,612 compared to 1,284).

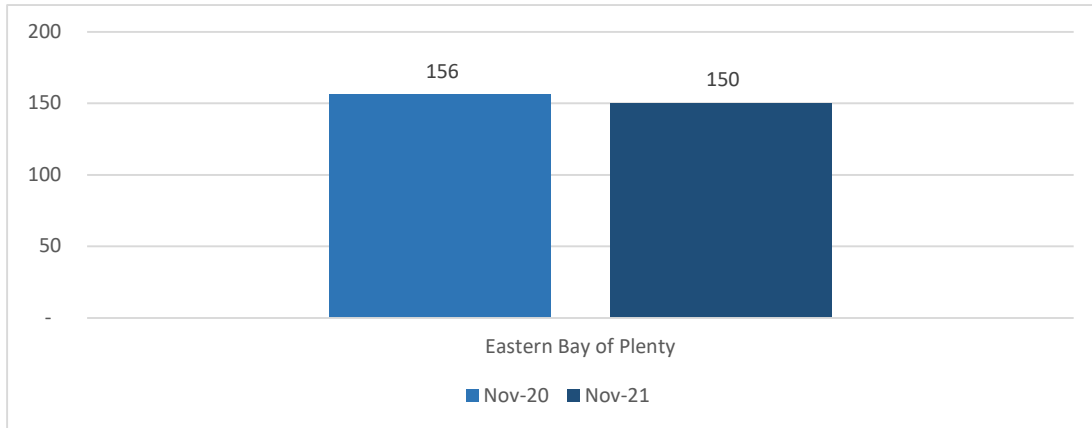
Figure 5b: Jobseeker Work-Ready Support for longer than 6 months duration, Eastern Bay



Grants

Transition to Work Grants are available to pay for things needed to find or start a job, such as clothes and travel. During the month of November 2021, 150 grants were allocated to Jobseeker Work-Ready Support recipients in the Eastern Bay service centres compared to 156 in November 2020. These figures can fluctuate substantially from one month to the next.

Figure 6: Transition to Work Grants in Eastern Bay



Transition to Work Grants during November 2021 numbered 75 in Whakatane, 39 in Opotiki and 36 in Kawerau.

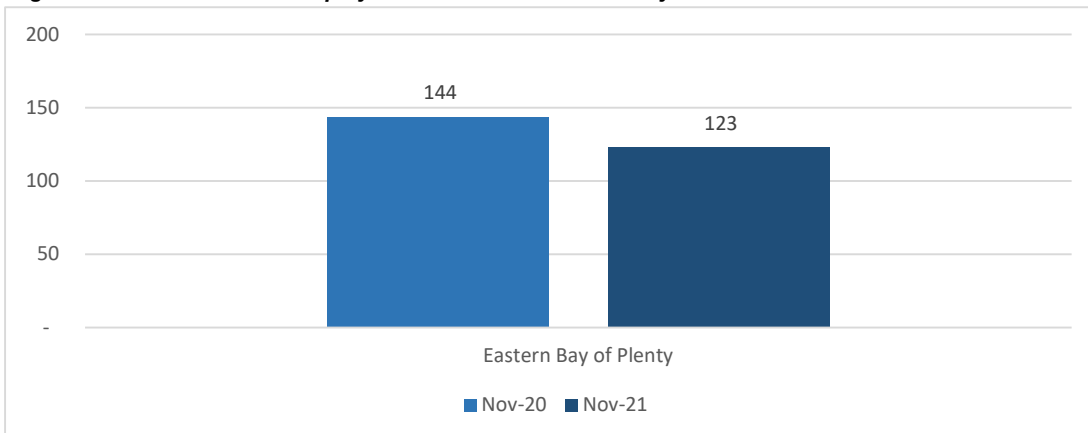
Table 6: Transition to Work Grants by area

Whakatane	Opotiki	Kawerau	Eastern Bay	Bay of Plenty
75	39	36	150	867

Cancellations for employment reasons

People receiving Jobseeker Support are required to notify Work and Income of any changes that might affect how much they get paid, including earning income. During November 2021, there were 123 cancellations for employment reasons in the Eastern Bay service centres compared to 144 during the same month last year. These figures can fluctuate substantially from one month to the next.

Figure 7: Cancellations for employment reasons in Eastern Bay



Cancellations for employment reasons during November 2021 comprised 72 in Whakatane service centre, 27 in Opotiki and 24 in Kawerau.

Table 7: Cancellations for employment reasons by area

Whakatane	Opotiki	Kawerau	Eastern Bay	Bay of Plenty
72	27	24	123	758

PART B: TREND DATA FOR INDIVIDUAL SERVICE CENTRES

Kawerau

Jobseeker Work-Ready Support by ethnicity - Kawerau service centre

Month	Maori	NZ European	Other	Pacific Island
Nov-20	680	119	18	11
Jul-21	603	114	18	13
Aug-21	629	123	20	14
Sep-21	626	123	17	13
Oct-21	610	120	17	12
Nov-21	552	109	17	13

Jobseeker Work-Ready Support by age - Kawerau service centre

Month	18-19	20-24	25-29	30-44	45-59	60+
Nov-20	81	154	124	213	232	53
Jul-21	57	133	103	205	210	66
Aug-21	60	140	102	220	222	68
Sep-21	70	133	110	213	208	70
Oct-21	64	132	107	210	204	69
Nov-21	60	120	97	178	199	62

Jobseeker Work-Ready Support by gender - Kawerau service centre

Month	Female	Male
Nov-20	362	495
Jul-21	335	438
Aug-21	347	464
Sep-21	349	454
Oct-21	338	447
Nov-21	283	432

Jobseeker Work-Ready Support by continuous duration - Kawerau service centre

Month	< 3 months	>3-6 months	>6 mths-3 yrs	>3-10 years	Over 10 yrs
Nov-20	81	103	479	149	45
Jul-21	116	64	389	156	49
Aug-21	137	75	391	160	49
Sep-21	86	106	398	164	50
Oct-21	72	118	383	162	51
Nov-21	69	97	364	142	44

Transition grants - Kawerau service centre

Month	Grants
Nov-20	41
Jul-21	70
Aug-21	62
Sep-21	28
Oct-21	30
Nov-21	36

Cancellations for employment - Kawerau service centre

Month	Cancellations
Nov-20	37
Jul-21	26
Aug-21	22
Sep-21	19
Oct-21	29
Nov-21	24

Opotiki

Jobseeker Work-Ready Support by ethnicity - Opotiki service centre

Month	Maori	NZ European	Other	Pacific Island
Nov-20	442	71	9	10
Jul-21	389	64	5	8
Aug-21	424	70	3	8
Sep-21	427	73	4	8
Oct-21	416	63	5	8
Nov-21	382	63	5	7

Jobseeker Work-Ready Support by age - Opotiki service centre

Month	18-19	20-24	25-29	30-44	45-59	60+
Nov-20	43	106	86	131	133	51
Jul-21	32	79	74	113	133	44
Aug-21	40	93	86	121	129	48
Sep-21	43	89	85	131	130	48
Oct-21	42	85	77	128	128	45
Nov-21	42	77	62	119	122	47

Jobseeker Work-Ready Support by gender - Opotiki service centre

Month	Female	Male
Nov-20	245	305
Jul-21	212	263
Aug-21	232	284
Sep-21	232	293
Oct-21	228	276
Nov-21	197	271

Jobseeker Work-Ready Support by continuous duration - Opotiki service centre

Month	< 3 months	>3-6 months	>6 mths-3 yrs	>3-10 years	Over 10 yrs
Nov-20	80	132	258	68	12
Jul-21	114	39	222	80	20
Aug-21	139	43	226	86	23
Sep-21	95	97	225	87	22
Oct-21	84	99	213	86	23
Nov-21	73	106	203	70	17

Transition grants - Opotiki service centre

Month	Grants
Nov-20	36
Jul-21	72
Aug-21	64
Sep-21	40
Oct-21	27
Nov-21	39

Cancellations for employment - Opotiki service centre

Month	Cancellations
Nov-20	31
Jul-21	33
Aug-21	21
Sep-21	18
Oct-21	27
Nov-21	27

Whakatane

Jobseeker Work-Ready Support by ethnicity - Whakatane service centre

Month	Maori	NZ European	Other	Pacific Island
Nov-20	1,032	200	42	16
Jul-21	976	157	37	16
Aug-21	1,025	165	38	16
Sep-21	1,047	158	38	17
Oct-21	994	147	35	14
Nov-21	901	145	33	12

Jobseeker Work-Ready Support by age - Whakatane service centre

Month	18-19	20-24	25-29	30-44	45-59	60+
Nov-20	117	264	182	402	292	72
Jul-21	101	217	174	375	281	72
Aug-21	114	239	173	395	287	73
Sep-21	116	240	176	396	299	73
Oct-21	110	219	170	374	284	68
Nov-21	96	210	156	327	265	70

Jobseeker Work-Ready Support by gender - Whakatane service centre

Month	Female	Male
Nov-20	540	788
Jul-21	529	690
Aug-21	544	735
Sep-21	544	754
Oct-21	513	710
Nov-21	453	669

Jobseeker Work-Ready Support by continuous duration - Whakatane service centre

Month	< 3 months	>3-6 months	>6 mths-3 yrs	>3-10 years	Over 10 yrs
Nov-20	187	198	739	172	33
Jul-21	200	110	669	206	35
Aug-21	254	120	653	220	34
Sep-21	231	169	640	225	35
Oct-21	186	183	605	216	35
Nov-21	154	198	553	189	30

Transition grants - Whakatane service centre

Month	Grants
Nov-20	79
Jul-21	109
Aug-21	142
Sep-21	82
Oct-21	78
Nov-21	75

Cancellations for employment - Whakatane service centre

Month	Cancellations
Nov-20	76
Jul-21	60
Aug-21	63
Sep-21	47
Oct-21	57
Nov-21	72

Contact Toi EDA

For further information about employment, skills and training opportunities in the Eastern Bay, contact:

Barbara MacLennan, Workforce Development Manager

Email barbara@toi-eda.co.nz, ph 027 425 2277

Website www.toi-eda.co.nz